

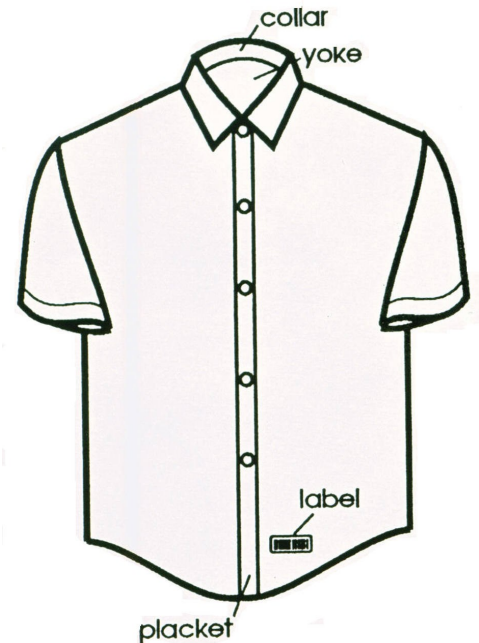


Label Placement Guide

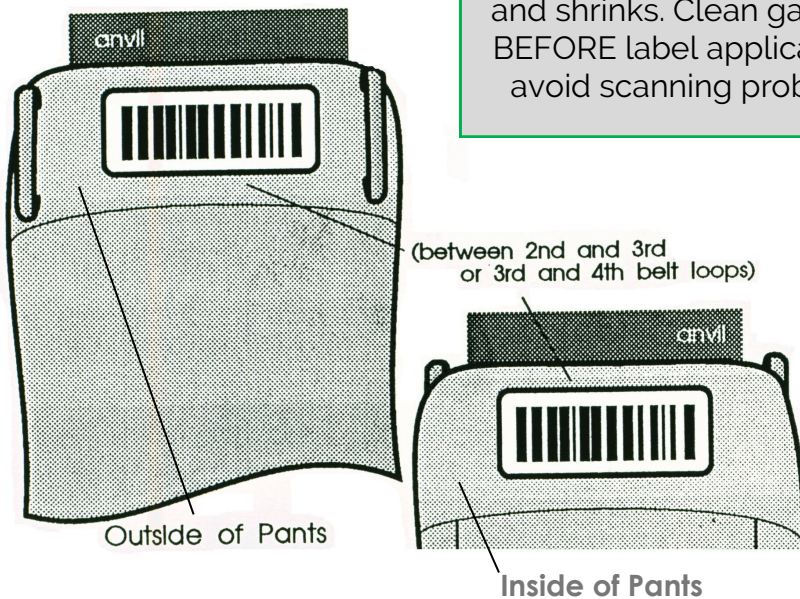
Barcode labels are easy to apply. Labels should be applied to a smooth, flat, even surface. Apply away from seams, creases, stitching, buttons or embellishments of any kind.

SHIRTS - The best area for label application is the shirt tail or placket area if your label is narrow enough to avoid stitching.

Label placement in the collar or yoke area of the shirt is not recommended if other labels are present that create an uneven application surface.



100% cotton fabric wrinkles and shrinks. Clean garments BEFORE label application to avoid scanning problems.

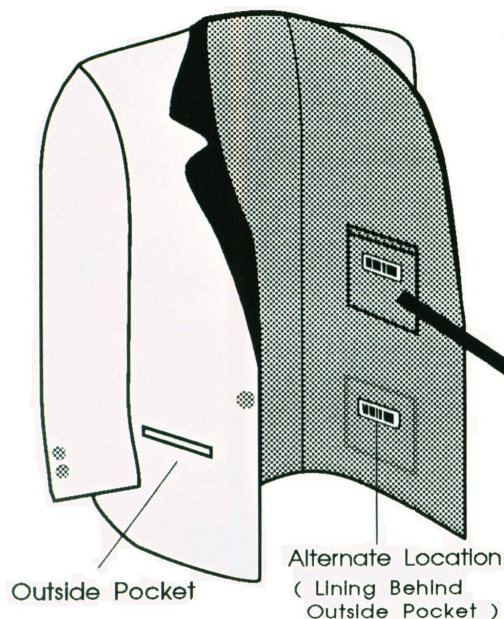


Belt loops and adjustment mechanisms should be OFF the platen surface when barcode is applied. This ensures the label will bond evenly to the garment.

PANTS - Labels can be applied to either the inside or outside waistband depending on your industry. If your garment has belt loops barcodes should be placed between the widest set of loops. If your garment has mechanical or elastic adjusters, barcodes should be placed well away from these mechanisms.

NOTE: The abrasive action of a belt may cause premature deterioration of barcodes when applied to the outside of the waistband.

For more information contact Amber@ipc-tags.com or 817-714-8400
Customer Service: 817-714-8400 • Order Fax: (817) 887-1725 • Corporate (972) 822-0934



BLAZERS & TUXEDO COATS: Apply barcode to the outside of the inside breast pocket or the lining behind an outside pocket.

If you have a gooseneck platen on your heat seal machine you can slip the pocket over the platen as shown so heat is applied only through the lining.



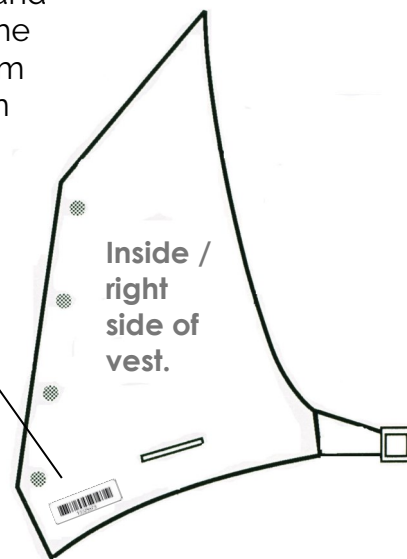
NOTE: If you do not have a machine with a gooseneck platen you should take the lining fabric in one hand and the outside garment in the other. Pull the two apart, fold over the lining and apply only through the lining fabric. This will avoid leaving any heat marks on the outer garment.

VESTS: Industry standards were established and indicate that barcodes should be applied to the right front point of vests. Be sure to apply them far enough away from the seam edge for even

Preferred Location

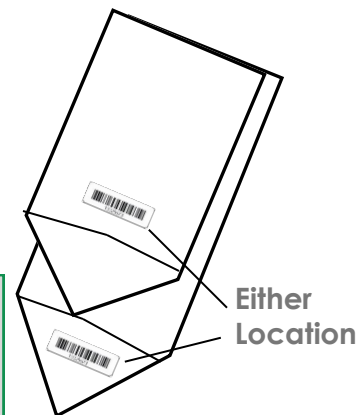
CUMMERBUNDS: Apply barcodes between the elastic strap and stay where there are the fewest layers of fabric.

Do not apply barcodes over stays. Remove stays so you have a flat, even surface and to allow heat penetration, then replace stays.



BOW TIES & LONG TIES: Barcodes should be applied to the strap as near to the bow or tie as possible. Barcodes placed too close to the adjustment mechanism could deteriorate prematurely.

Apply barcodes either to the strap of the long tie or to the back. Which ever is easiest for your particular production environment.



For more information contact Amber@ipc-tags.com or 817-714-8400
Customer Service: 817-714-8400 • Order Fax: (817) 887-1725 • Corporate (972) 822-0934