



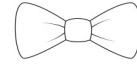
3 Keys to Success in Barcode Label Application

• Time



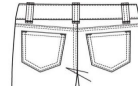
LIGHT GARMENTS
or FABRICS

10-12 Seconds



HEAVY FABRICS

12-14 Seconds



• Temperature



TOP HEAT

385°-400° F

196°-204° C

BOTTOM

300°-330° F

148°-165° C



• Pressure



2" x 4" PLATEN

25 - 30 psi (air)

3" x 5" PLATEN

50 - 60 psi (air)

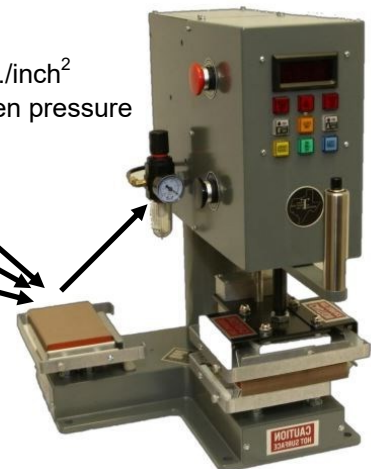
4" x 6" PLATEN

70 - 85 psi (air)

3-1/4" x 5" GOOSENECK

55 - 65 psi (air)

25-28 lbs./inch²
 inter-platen pressure



For more information on application, heat seal machine settings, trouble shooting:
 see our website ipc-tags.com and click on 'Resources and Links' and then click on 'Application Specs for HT Labels'.

For ordering labels, prices, or more information contact Amber@ipc-tags.com

Customer Service: 817-714-8400 • Order Fax: (817) 887-1725 • Corporate (972) 822-0934

BARCODE LABEL STORAGE INSTRUCTIONS

To prolong the quality of the label,
store in a dark, dry dust-free atmosphere
at room temperature (approx. 68-75° F or 20-21° C).

DO NOT FREEZE OR PLACE NEAR HEAT SOURCE

The Best Used By date (MM/YYYY)

is printed on the box label of each package of 1,000 labels.

**When properly stored, the shelf life of an unapplied label is
at least 14 months.**

